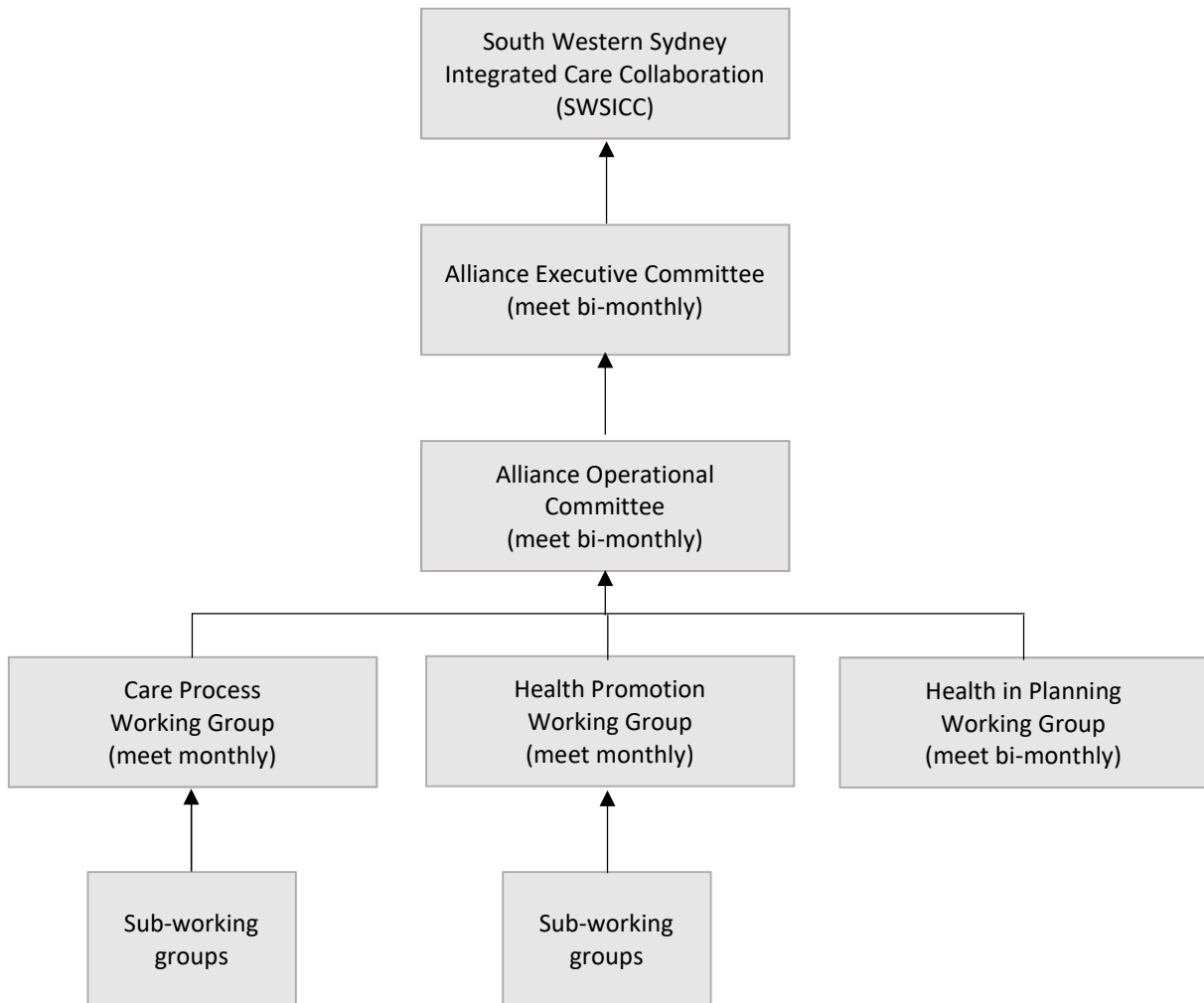


## Governance Framework



## Committee Summary

	Membership	Role
Alliance Executive Committee	<ul style="list-style-type: none"> <li>Senior executive of each partner organisation</li> </ul>	Manage the Alliance and implement the actions aligned to the Memorandum of Understanding
Alliance Operational Committee	<ul style="list-style-type: none"> <li>Up to 3 representatives from each partner organisation</li> <li>General Practice</li> <li>Non-Government Organisations</li> <li>Other Government agencies</li> <li>Private industry</li> </ul>	Provide governance over the development and implementation of an integrated primary and community health model of care
Working Groups	<ul style="list-style-type: none"> <li>Up to 2 representatives from each partner organisation</li> <li>General Practice</li> <li>Non-government Organisations</li> <li>Private industry</li> <li>Research and university groups</li> </ul>	Utilise subject matter expertise to support the planning, design, implementation and evaluation of initiatives across Wollondilly Shire, and facilitate change on the ground.